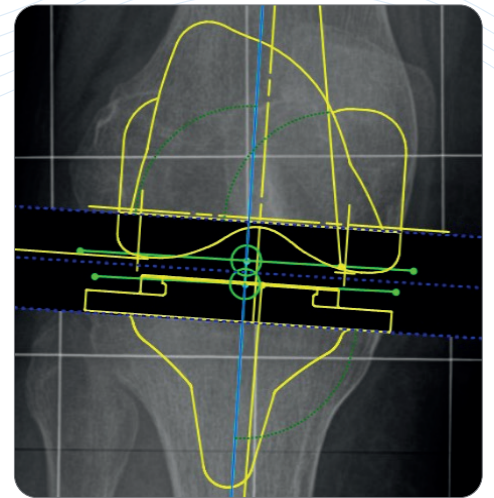
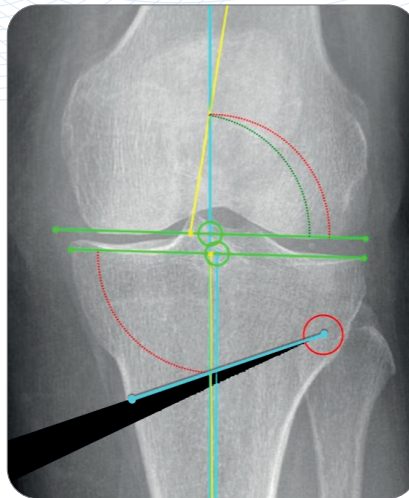
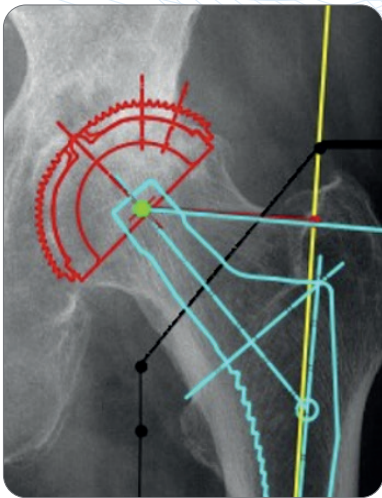


# mediCAD<sup>®</sup> Web



Platform independent planning  
Automatic planning storage  
Central user management  
Modern user interface  
Audit compliance



*mediCAD*<sup>®</sup>  
The Orthopedic Solution



[www.mediCAD.eu](http://www.mediCAD.eu)



## Digitalization in hospital preoperative planning



The age of digitalization has now also arrived in hospitals. Technology is playing an increasingly important role in cross-departmental communication. A recent user satisfaction survey of clinical IT systems showed that more than a third of clinicians are dissatisfied with the ease of use of hospital IT systems. The main issues were a lack of user-friendliness, inadequate performance and outdated or cumbersome processes (see German Medical Science, October 2017 at: <https://www.egms.de/static/de/journals/mibe/2017-13/mibe000171.shtml>).

Hospitals are increasingly facing the challenge of enabling more flexibility for their surgeons. Be it because they only operate as in-patient physicians at the hospital but diagnosis takes place in the practice, or because senior physicians are always on the move within the hospital and rarely at their workplace.



mediCAD® Web is the ideal solution for all hospitals and practices in the digital age to offer user-friendly, uncomplicated and above all flexible planning software.

Easy access to the planning software via browsers

No dependency on a specific work center

No need to install the system on the client

Custom start page for each user, with automatic planning storage

Easy to connect referring physicians to a central hospital

Uncomplicated, central administration of users

## Browser

mediCAD® Web is a web application executed via internet browsers. So there are no requirements for the device from which the application is accessed. These apply solely to the server on which the application is running. mediCAD® Web supports the following browsers:

- Microsoft Edge
- Mozilla Firefox
- Google Chrome
- Apple Safari

This applies to **PCs**, **Macs**, **iPads** and **Android Tablets**.

# Key Features

You can now use the proven mediCAD® functionality from anywhere thanks to web technology.

## Flexibility ✓

mediCAD® Web offers maximum flexibility. As a web application, you can access the planning software when and where you want. Log in from your tablet or any other device via an internet browser to start working.

## Efficiency ✓

Due to the reduced workflow, which is deliberately simplified and limited to the essential components, as well as our support, planning can be carried out with the greatest possible efficiency.

## Clarity ✓

The mediCAD® Web user interface is simple, modern and easy to understand. An intuitive planning process ensures that the software is easy to use.

## Cost savings ✓

Central user management and simple administration via the server helps to save costs. Cumbersome client setup and virtualization is no longer required.

## Audit compliance ✓

mediCAD® Web is certified as a medical device and fulfills all requirements for saving the planning in the hospital systems in an audit-compliant manner. Together with the qualified training courses conducted by mediCAD Hectec GmbH, the software guarantees users audit compliance.



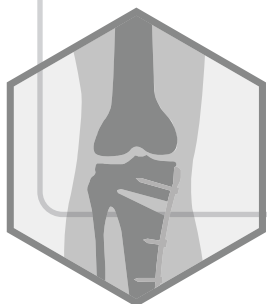
## The following modules are available



**Hip 2D**



**Knee 2D**



**Long Leg 2D**

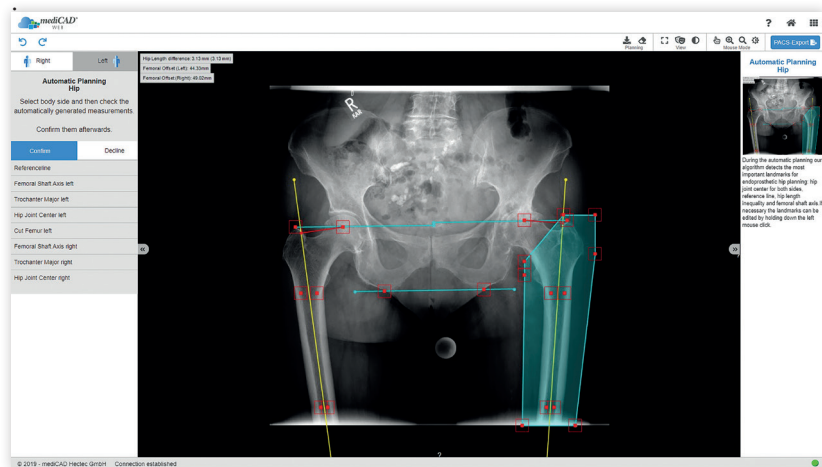


**Radiology 2D**

## Hip 2D Module

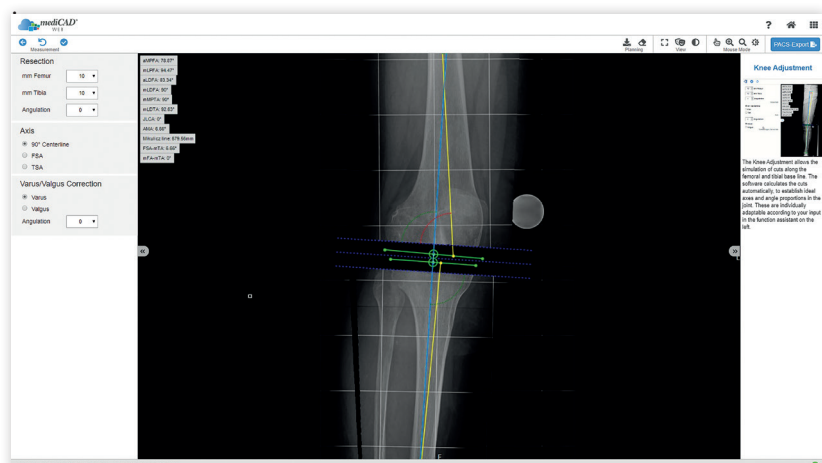
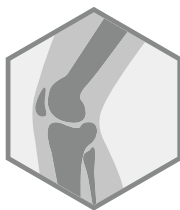
### Hip 2D

The „Hip 2D“ module in **mediCAD® Web** allows you to efficiently achieve a planning outcome for your total hip replacement planning. The automated landmark detection proposes the placement of the most important measurement points, enabling you to rapidly insert the implants.



## Knee 2D Module

You can plan total knee replacements using the „Knee 2D“ module. Potential axial malalignments can be determined and corrected during planning. This enables preoperative and postoperative assessment of corrections to the transmission of force throughout the leg. The software corrects the malalignment automatically or based on manual specifications, depending on the desired objective. You calculate the expected postoperative mechanical axes, longitudinal axes and all relevant angles.

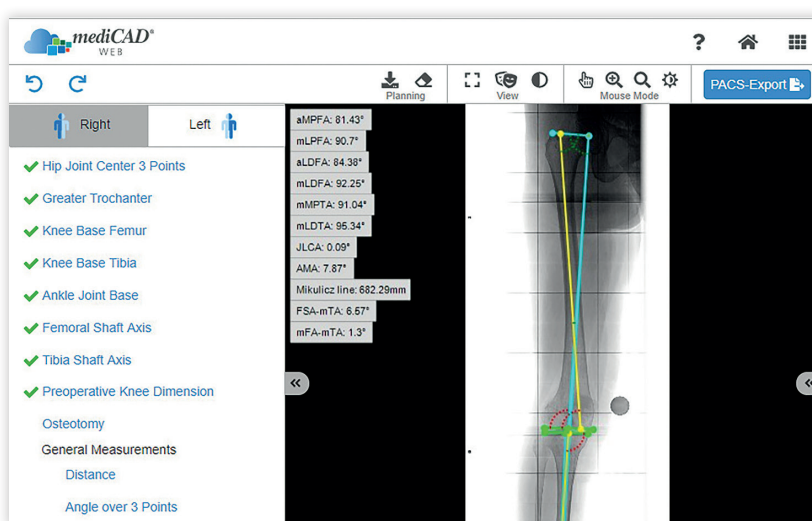




## Long Leg 2D Module

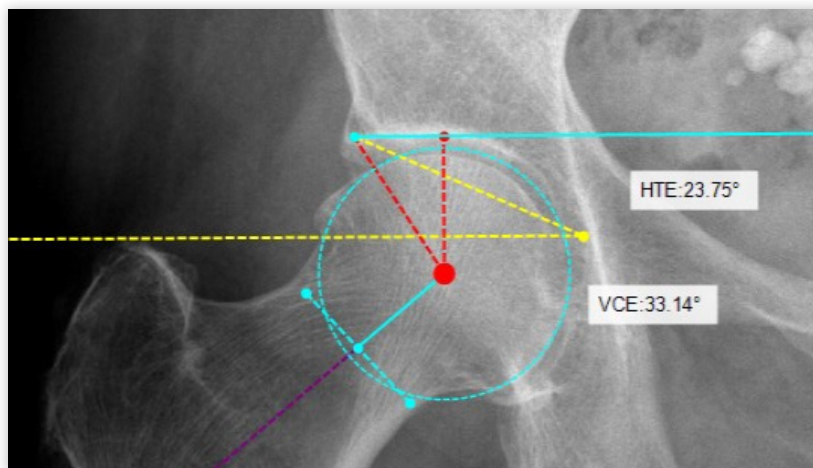
The „Long Leg 2D“ module allows you to plan single- or multi-stage corrective femoral or tibial osteotomies, using either an open wedge or closed wedge technique.

Axial malalignments are determined independently and are automatically or manually corrected. Suitable components for osteosynthesis, such as nails, plates, or screws, can conveniently be selected from a database.



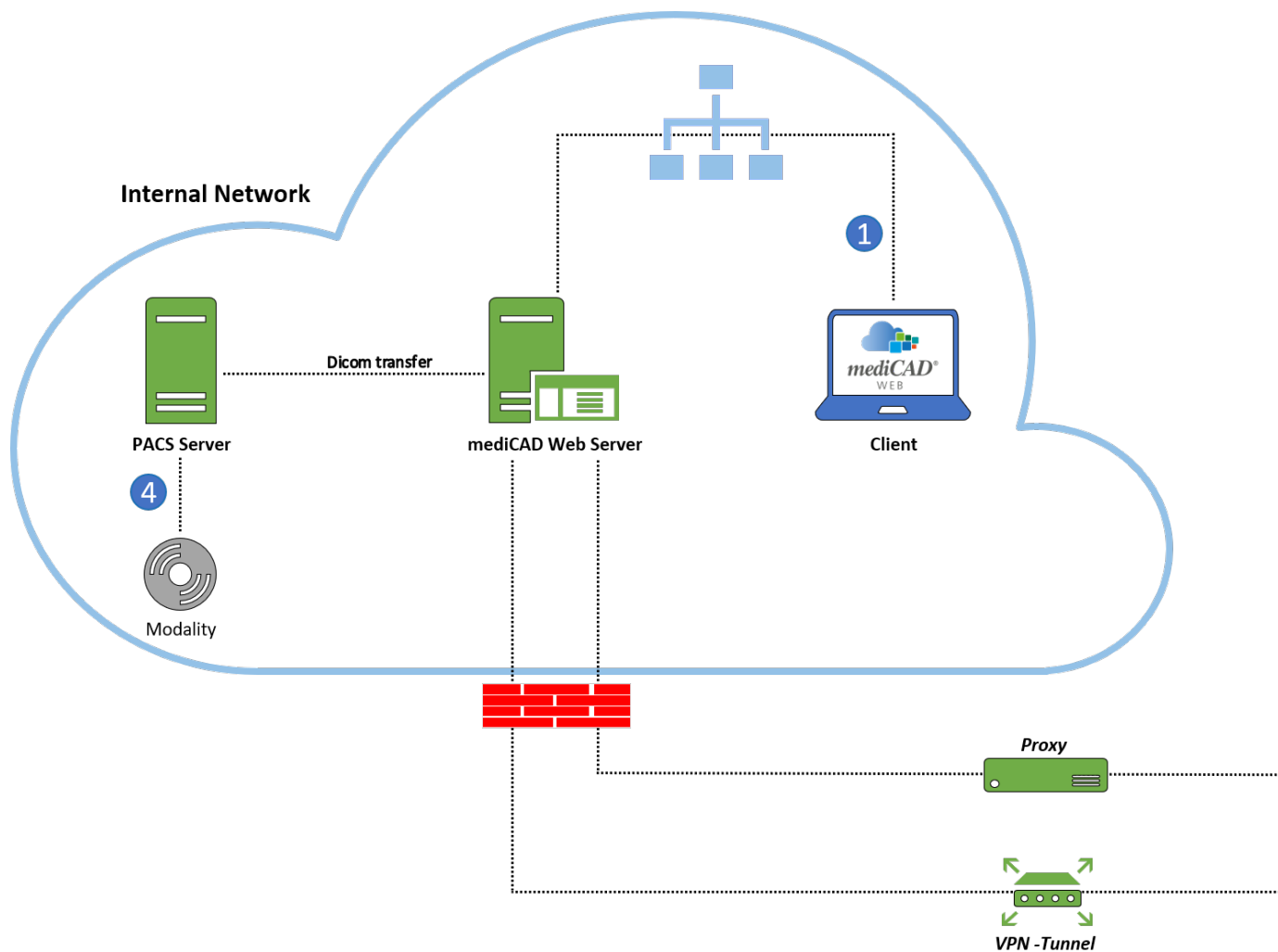
## Radiology 2D Module

The „Radiology“ module is specifically designed for radiologists. The plethora of radiological measurements within a single application facilitates rapid recognition and assessment of the pathological state, as well as the ability to make these findings accessible to others via highly encrypted storage in PACS.



# Hospital hosting

mediCAD® Web can be installed as an application on a server provided by the hospital. The hospital hosts the web application itself, so to speak. This ensures that no patient data leave the hospital threshold. Access to patient data via the application is possible only within the hospital network.







## REFERRER integration

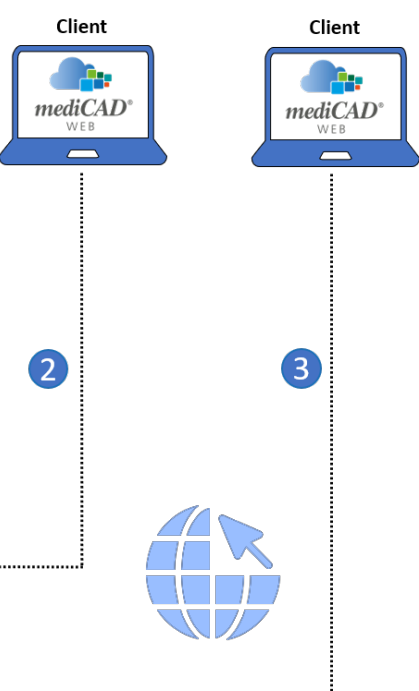
As shown in the flowchart, users access mediCAD® Web via a browser on any device ❶.

Entering the URL in their browser search box gives users access to their individual start page from any device within the network ❷.

It is also possible to connect users located outside the hospital by providing them with VPN access to the hospital network ❸.

This gives them access to the network and the mediCAD® Web application no matter where they are. Connection via proxy is easier still ❹.

This is a program that checks and legitimizes a client's requests for a specific web page and passes them by proxy. After users have logged in, they can access the PACS within the application ❺.



## **REFERRER** integration

A connection set up specifically for this purpose between the application server and the PACS server enables this referrer integration. Users select a specific DICOM within mediCAD® Web and can then start planning directly. The servers communicate in the background. The user remains on the website of the application at all times.

## **DICOMS** transfer

mediCAD® Web includes a query-client plug-in, which loads images from the PACS and returns them via Query/Retrieve + Store or Query/Store.

## **LICENSE** management

mediCAD® Web is equipped with the same license tool as mediCAD® 2D. Any number of users can be created within the central user management. Only the number of users planning at the same time is limited.

## **APPLICATION** administration

With mediCAD® Web User Management, the hospital can manage the application itself easily and without complications. This means that an administrator can create, edit and/or delete mediCAD® Web users. Access data management can also be performed by the administrator (e.g. reset password). The administrator can also set up various PACS nodes via user management. This is a unique selling point of the software and makes the hospital even more autonomous and independent.



## DATA protection

All data transfer is secured by the internal hospital network. In addition, the server for mediCAD® Web must be integrated into the existing network. This includes enabling the ports, creating the domains and assigning a certificate. This ensures that unauthorized third parties outside the network do not have access to the application.

The files within the application server are stored in encrypted form. To enable planning, a hash value is generated from the login data of the user, which is compared with the hash value in the memory. The data can only be decrypted if these two hash values match. This also ensures that all users have their own start page and can view only their own planning data.

Detailed information on data protection in mediCAD® Web can be found in the separate information brochure „Data security and data protection“ provided by mediCAD Hectec GmbH.

## 2D expansion

mediCAD® Web can also be used in mixed operation with mediCAD® 2D. Both products use the same license tool. With an enabling fee, a product extension for mediCAD® Web can be purchased (for existing mediCAD® 2D contracts with Evergreen maintenance). The application then accesses the customer's existing licenses. A license extension is therefore not necessary.



#### Headquarter:

**mediCAD Hectec GmbH**  
Opalstr. 54  
D-84032 Altdorf  
GERMANY

**Branch office Bad Homburg:**  
Werner-Reimers-Straße 2-4  
D-61352 Bad Homburg  
GERMANY

☎ +49 871 330 203-0  
✉ +49 871 330 203-99  
info@mediCAD.eu  
[www.mediCAD.eu](http://www.mediCAD.eu)

#### Further sales offices:

##### France

☎ +33 66 3794574  
france@mediCAD.eu

##### Russia

☎ +7 906 255 93 55  
russia@mediCAD.eu

#### USA:

**mediCAD US, Inc.**  
191 Peachtree St., NE, Suite 3720  
Atlanta, GA 30303  
USA

☎ +1 404 263 - 31 23  
✉ +1 404 586 - 68 20  
info@mediCAD.us  
[www.mediCAD.us](http://www.mediCAD.us)

##### Italy

☎ +39 347 7371311  
italy@mediCAD.eu

##### Spain

spain@mediCAD.eu